

Main Feature

1. **3D heat dissipation**, professional and better heat dissipating effect .
2. coating and anodizing lamp body, corrosion resistance & no fading
3. silicon sealing ring , **waterproof IP67** .
4. pass professional wind tunnel test , can be **17 grade hurricane proo**
5. Diameter of socket: 60mm .



3D heat-dissipation with air channel connection inside & outside, perfect heat dissipating .



processed by coating and anodizing, makes lamp corrosion resistance and no color fading for long time .



silicon sealing circle , ensures IP65 grade .



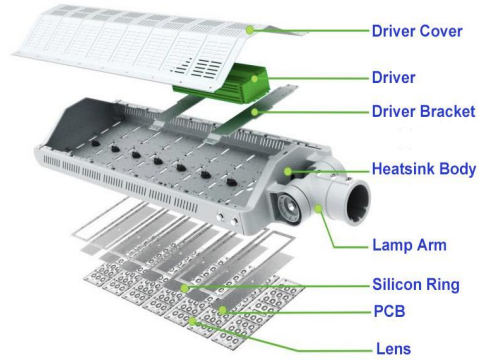
pass professional wind tunnel test , can keep well under 17 grade typhoon, no deformation or loosening .

6. lamp body and lamp arm **can be adjusted** to different angles.
7. led chip brand : **Bridgelux** (130—140lm/w)
8. led driver brand : **Meanwell** (UL listed , 5 years warranty)
9. warranty : 3 years warranty for the whole lamp .
10. certificate : CE ROHS UL



can adjust lamp body up to 90° (upward)

can adjust lamp arm up to 90° (downward)



Picture



Specification

Model No.: CP-FL03-350WB

Power : 350W

Input Voltage: AC 90-277 V

LED Chip: Bridgelux

LED Quantity : 168 pcs

Operating Temperature : -40°C~55°C

Power Factor : PF>0.95

Lumen Output : 35000lm

CCT : 2700K-7000K

IP Rating : IP67

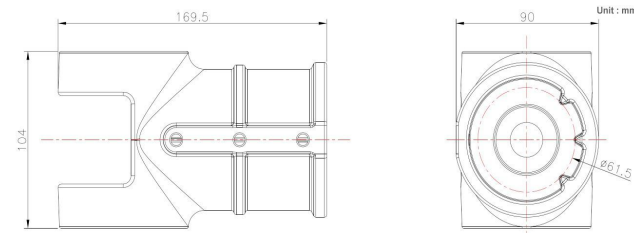
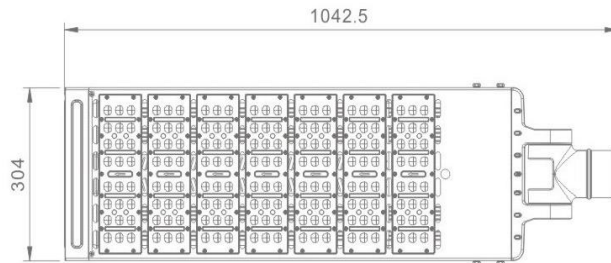
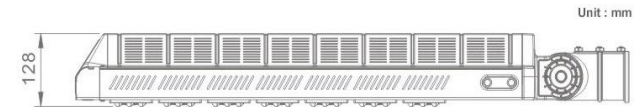
Lifespan : 50000 hours

Lamp Body : Aluminum

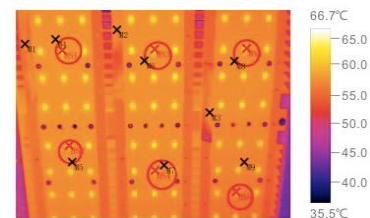
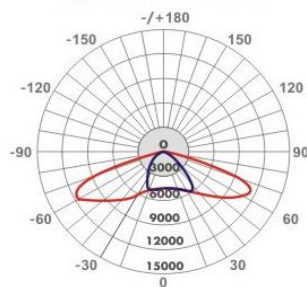
Lens : PC

Lamp Dimension : 1042.5*304*128mm

Lamp Weight : 9.5kg



Light distribution curve



Chip Average temperature : 63.5°C